

**Apartment 1**

Living/Kitchen	7.62m x 4.40m	25'0" x 14'5"
Bedroom 1	3.49m x 3.01m	11'5" x 9'11"
Bedroom 2	3.19m x 2.88m	10'6" x 9'5"

\*All measurements taken from the widest point

**Apartment 3**

Living/Kitchen	7.62m x 4.40m	25'0" x 14'5"
Bedroom 1	3.49m x 3.01m	11'5" x 9'11"
Bedroom 2	3.19m x 2.88m	10'6" x 9'5"

\*All measurements taken from the widest point

**Apartment 2**

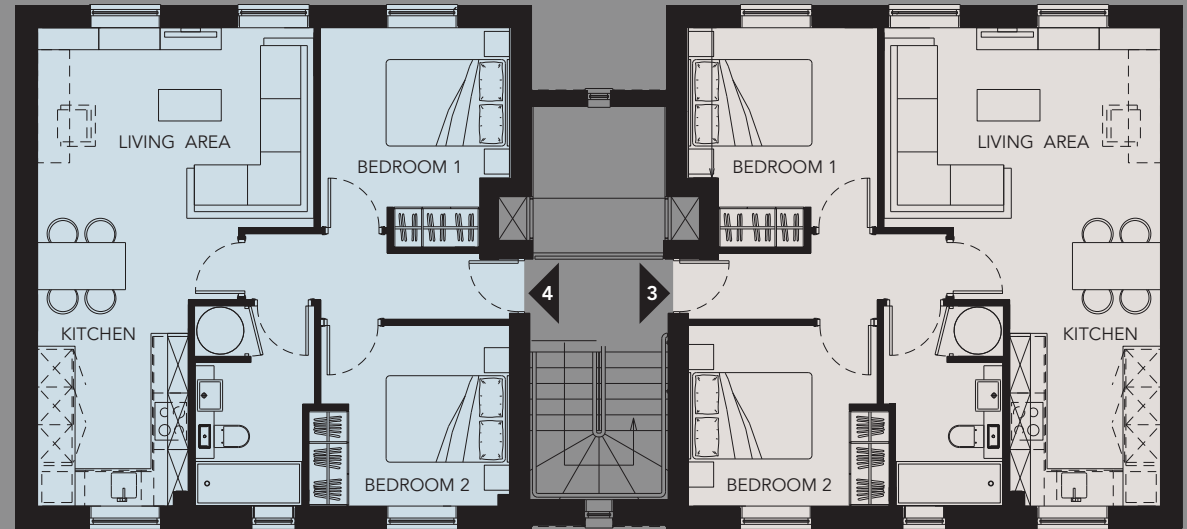
Living/Kitchen	7.62m x 4.40m	25'0" x 14'5"
Bedroom 1	3.49m x 3.01m	11'5" x 9'11"
Bedroom 2	3.19m x 2.88m	10'6" x 9'5"

\*All measurements taken from the widest point

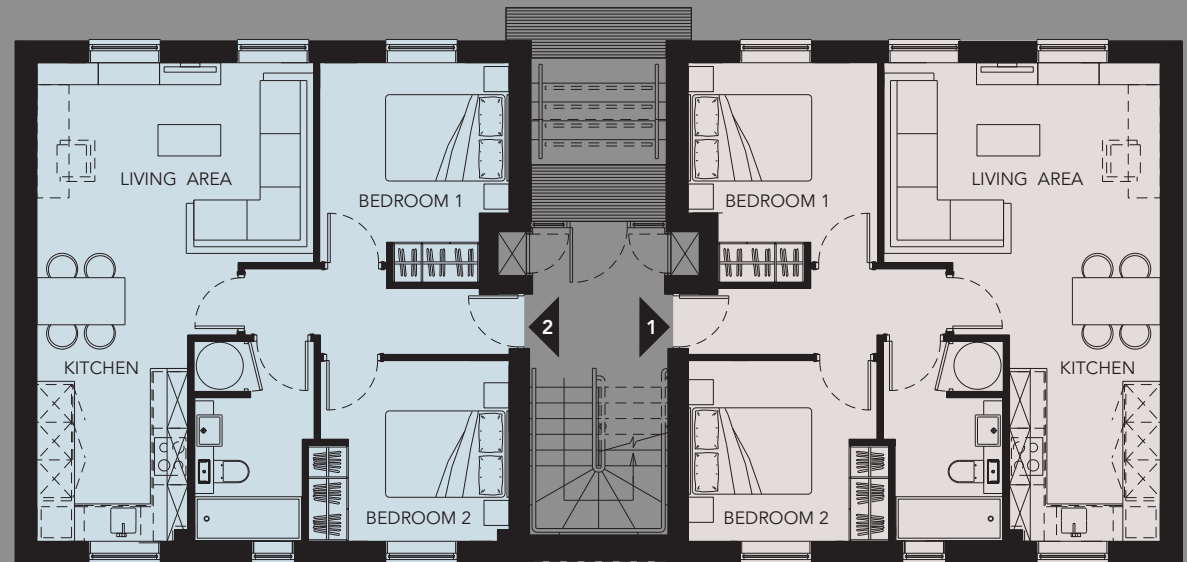
**Apartment 4**

Living/Kitchen	7.62m x 4.40m	25'0" x 14'5"
Bedroom 1	3.49m x 3.01m	11'5" x 9'11"
Bedroom 2	3.19m x 2.88m	10'6" x 9'5"

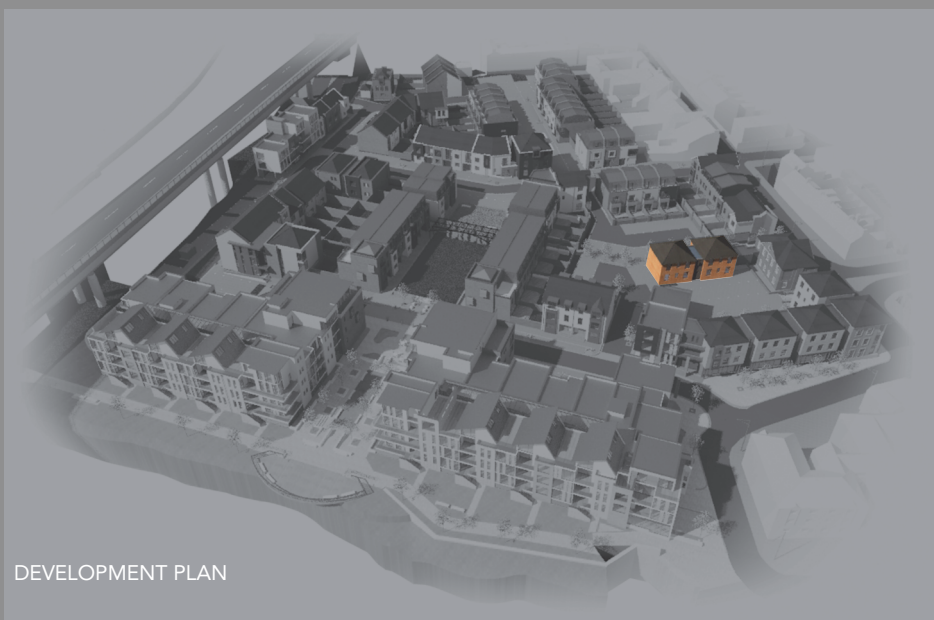
\*All measurements taken from the widest point



FIRST FLOOR



GROUND FLOOR



DEVELOPMENT PLAN

# APARTMENT SUITES B3 GROUND & FIRST FLOOR

Disclaimer: Chepstow Property Company reserves the right to alter any part of the development, specification or floor layouts at any time. Floor plans, site plans and CGI images have been measured from architectural plans and are intended to give a general indication of the proposed development and floor layouts. The contents herein shall not form any part of any contract or be a representation inducing any such contract. The dimensions are intended for guidance only and may vary by +/- 5%. Purchasers are advised to contact the marketing suite for further information and seek professional guidance relating to the purchase where necessary.

